

16.Nxd5 Rxd5 17.Nc6
Re8 18.Rfe1 e5±]

15.Ne4?

[15.Nd5! Rfd8 16.Nc7
Rac8 17.Nxa6 Rd6
18.Nxc5 Rxc5 19.Nb7
Rxc2 20.Nxd6 exd6±]

15...Rac8 16.Rb1?!=

[16.h3 Nf6 17.Nc3 e6
18.Re1±]

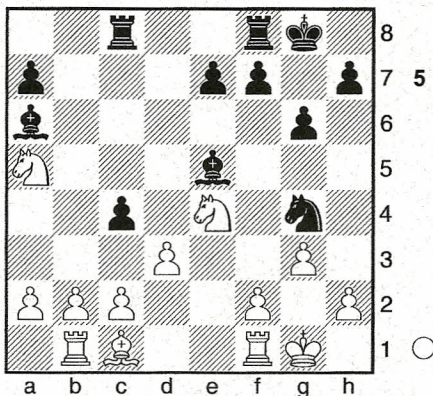
16...Be5

[16...c4 17.dxc4 Bxc4
18.Nxc4 Rxc4 19.f3 Bd4+
20.Kh1 Nf6 21.Nxf6+
Bxf6 22.c3±]

17.g3

[17.h3 Nf6 18.Nxf6+
Bxf6 19.b3±]

17...c4 Diagram



18.f4??

[18.dxc4 Bxc4 19.Nxc4
Rxc4 20.f3±]
[18.Nxc4 Bxc4 19.dxc4
Rxc4 20.f3±]

18...Bd4+ 19.Kg2 Be3??

[19...cxd3! 20.c3 Bb6
21.Nb3 f5 22.Nf2 d2
23.Bxd2 Bxf1+ 24.Rxf1
Bxf2 25.Rxf2 Nxf2
26.Kxf2-+]
[19...f5! 20.Ng5 cxd3
21.c3 Bb6 22.h3 Nf6
23.Nb3 Bb7+ 24.Nf3 Ne4

25.Re1 Rfd8 26.Rd1 a5
27.Nbd2 Rd7 28.a3 g5
29.fxg5 Nxg5 30.h4 Nxf3
31.Nxf3 e5-+]

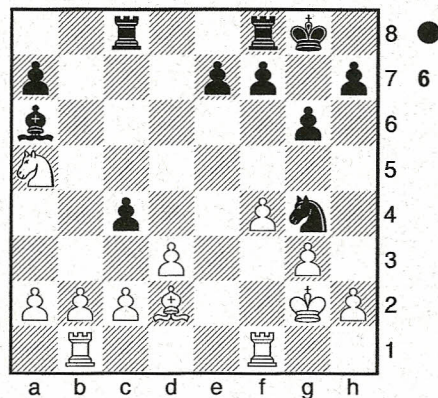
20.Nd2??

[20.Re1 Bxc1 21.Rbxc1
cxd3 22.h3 Rfd8 23.Nb3
Nf6 24.cxd3 Rxc1
25.Nxf6+ exf6 26.Nxc1
Bxd3 27.Nxd3 Rxd3=]

20...Bxd2??

[20...cxd3 21.c3 Bb6
22.Ndb3 d2 23.Bxd2
Rfd8 24.Rfe1 Bxa5-+]

21.Bxd2 Diagram



Rc5?!

[21...cxd3 22.c3 Rfd8
23.Rfe1 Rc7 24.b4 Bb5
25.Rbc1 Rdc8=]

22.Bb4?!

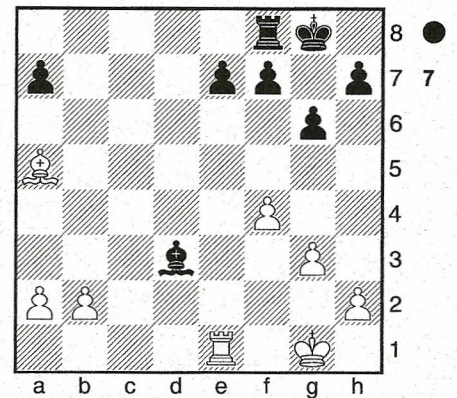
[22.dxc4 Bxc4 23.Nxc4
Rxc4±]
[22.Nxc4 Bxc4 23.dxc4
Rxc4±]

22...Rxa5?!

[22...Rb5 23.Bd2 cxd3
24.cxd3 Rd8 25.Rf3
Rh5 26.h3 Bxd3 27.hxg4
Bxb1 28.gxh5 Rxd2+
29.Rf2 Rd5 30.Nc6 Be4+
31.Kf1 Rxh5 32.Nxe7+
Kf8±]

23.Bxa5 Ne3+ 24.Kg1

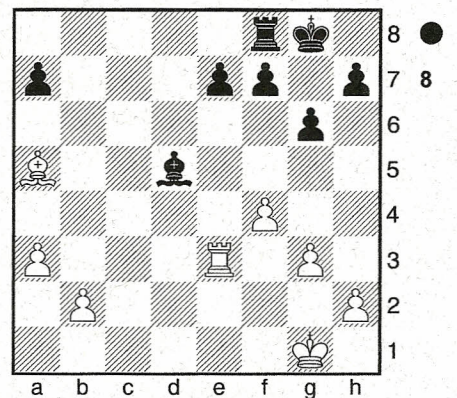
Nxf1 25.Rxf1 cxd3
26.cxd3 Bxd3 27.Re1=
Diagram



Be4?? 28.Re3?? Bd5

[28...f5 29.Rc3 Rb8
30.b3 Kf7 31.Kf2=]

29.a3= Diagram



It's equal and there is not much to be done. Black has to play e6 to hold. You can harass a little but it's dangerous! The strong hold on d5 is better because white can't post his bishop in the center using pawns! The king sides pawns will slowly become mobile!

Rc8?!

[29...e6 30.Rc3 f6
31.Rc5 Rf7 32.Bc3 h6
33.Bd4 a6 34.b4 Kg7
35.Kf2 g5=]